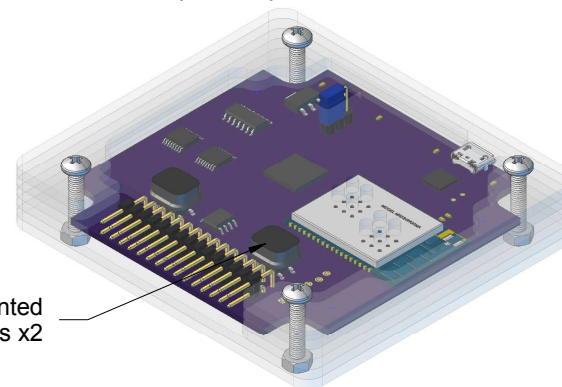
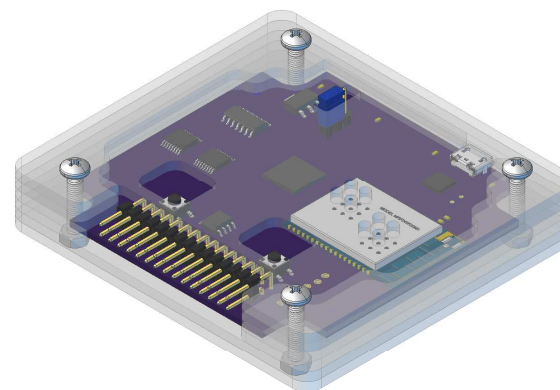


OpenScope MZ DXF V1



3D Printed Buttons x2

OpenScope MZ DXF V2



If you have access to a 3D printer, you can print and cutout the version 1 case, otherwise cutout version 2 for a larger button access.

NOTES

1. Both DXF versions are exported in millimeters
2. 3D printed button is also exported in millimeters

MATERIAL

FINISH

UNITS

OpenScope MZ Acrylic Case

OpenScope MZ Acrylic Case

SIZE
A

DATE

DWG NO.

REV

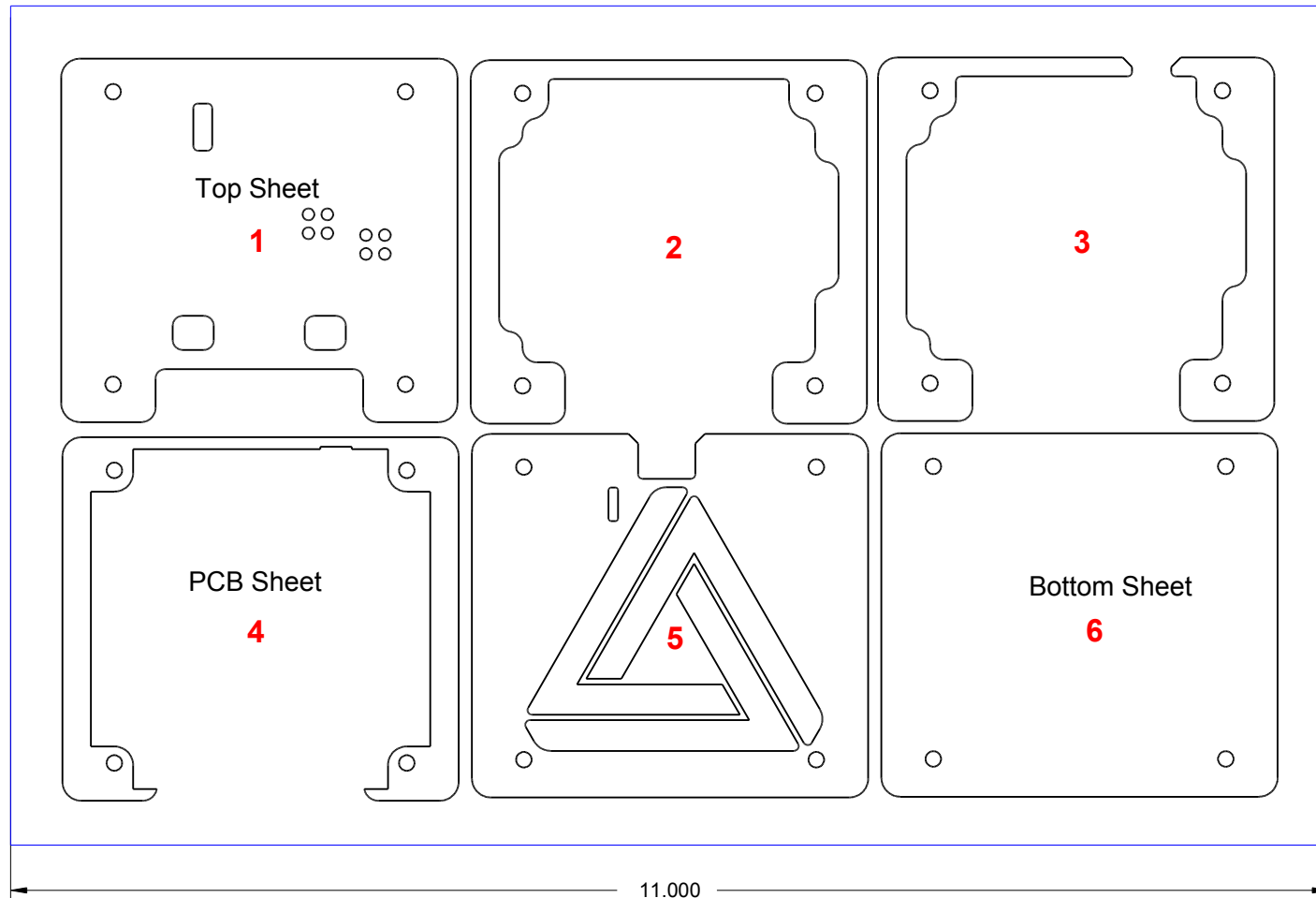
SCALE

DRAWN BY:
DS

SHEET

1 OF 5

7.000



NOTES

1. All pieces are 3/32" thick (~2.4mm)
2. Minimum requirement of a 7"x11" sheet to cut all six pieces.
3. The order and orientation of the assembly is shown above with number one being the top sheet and six the bottom sheet.

MATERIAL

Acrylic/Pexiglass

FINISH

UNITS

Inches

Order of Sheets

OpenScope MZ Acrylic Case

SIZE
ADATE
06/29/2017

DWG NO.

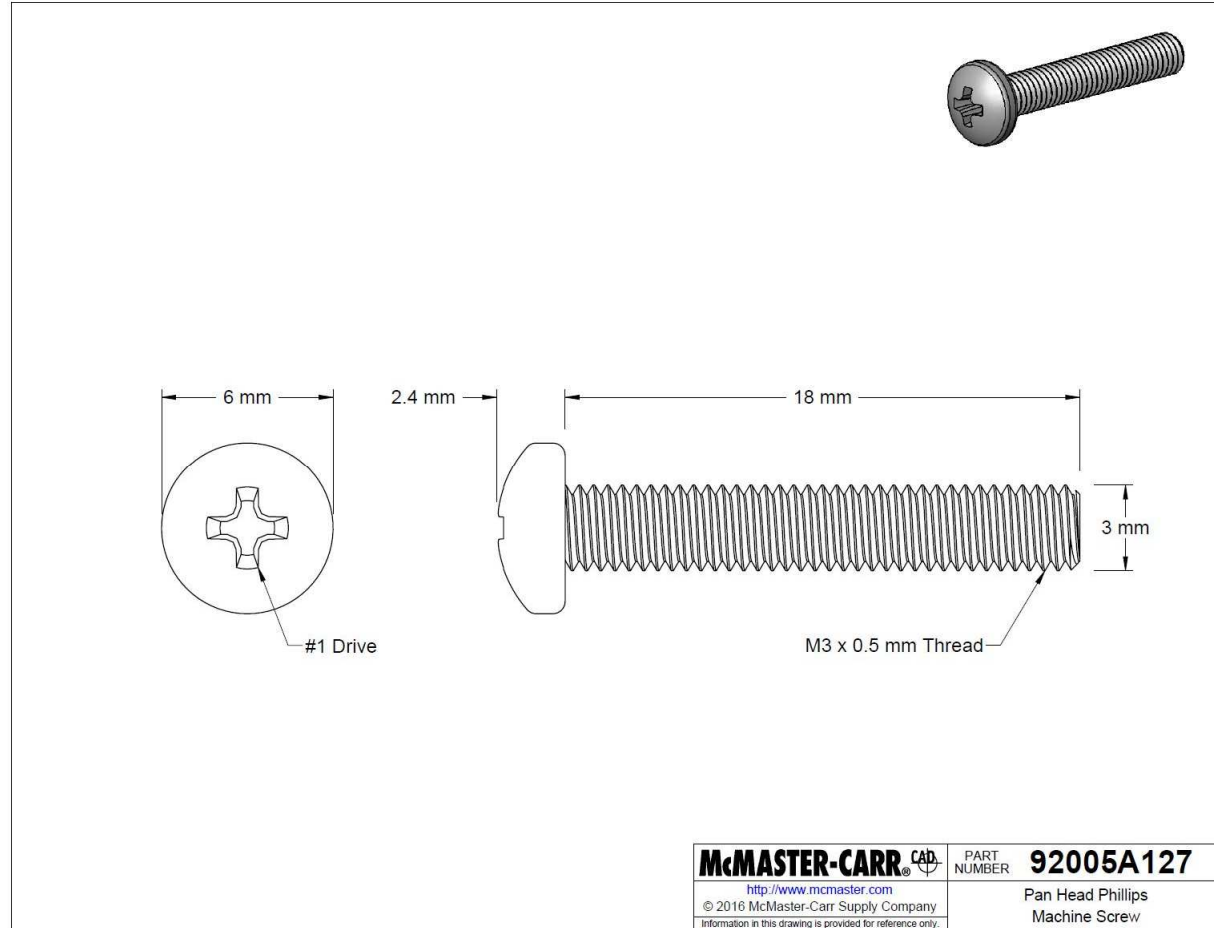
REV

SCALE

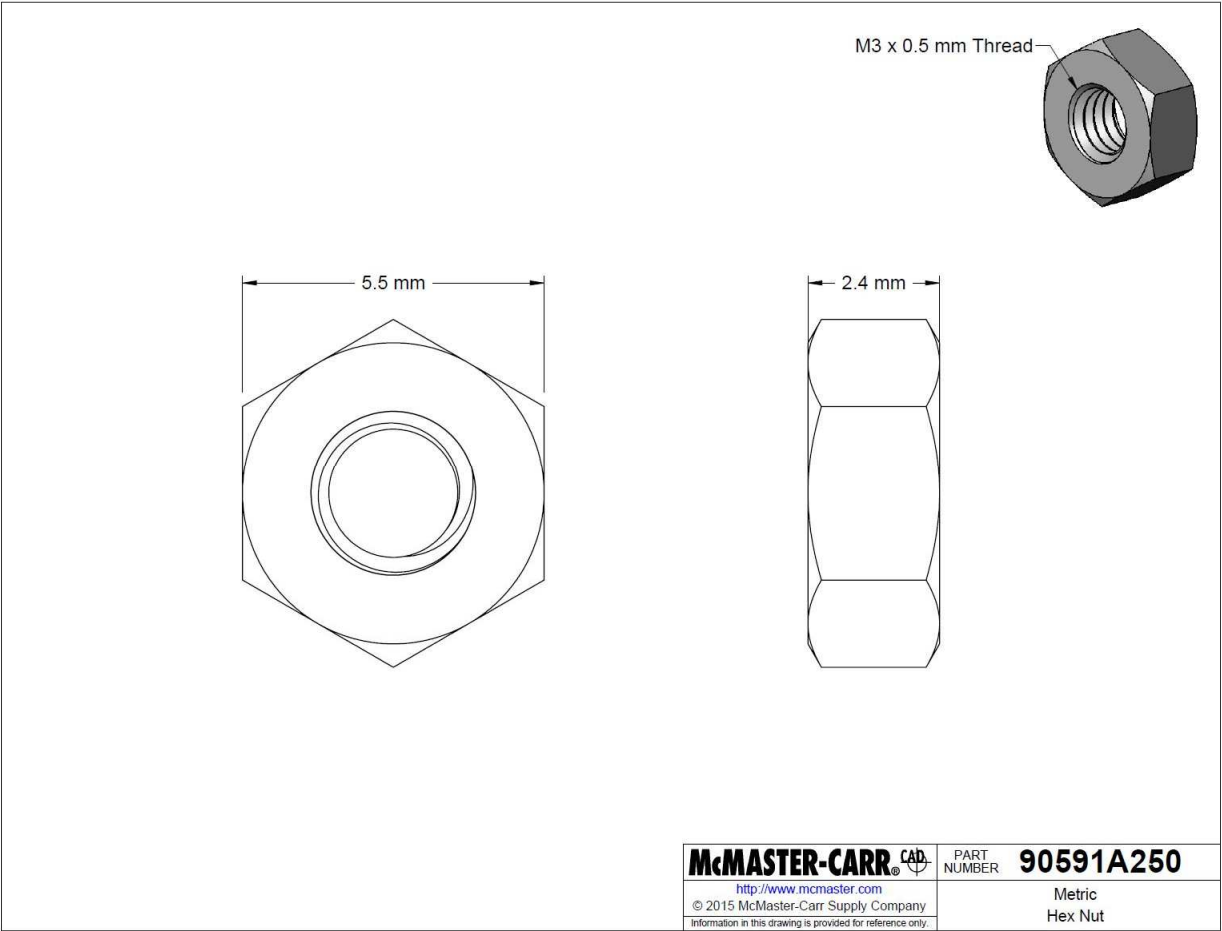
DRAWN BY:
DS

SHEET

2 OF 5



<div>NOTES</div> <div>1. Quantity of 4 screws needed</div>	MATERIAL	Screws				
	FINISH	OpenScope MZ Acrylic Case				
		SIZE A	DATE 06/29/2017	DWG NO.		REV
	UNITS mm	SCALE		DRAWN BY: DS		SHEET 3 OF 5



McMASTER-CARR CAD
<http://www.mcmaster.com>
© 2015 McMaster-Carr Supply Company
Information in this drawing is provided for reference only.

PART NUMBER **90591A250**
Metric
Hex Nut

NOTES
1. Quantity of 4 nuts needed

MATERIAL

Nuts

FINISH

OpenScope MZ Acrylic Case

SIZE
A

DATE
06/29/2017

DWG NO.

REV

UNITS

mm

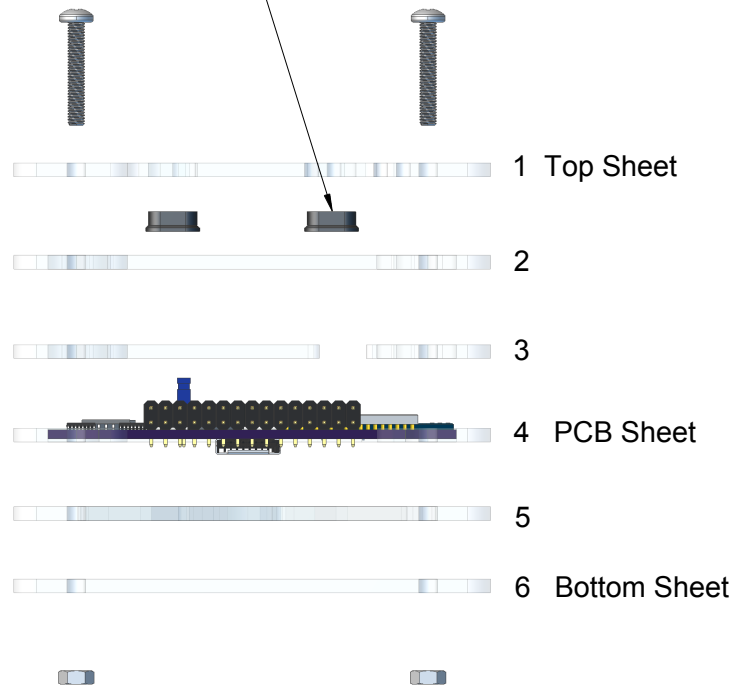
SCALE

DRAWN BY:
DS

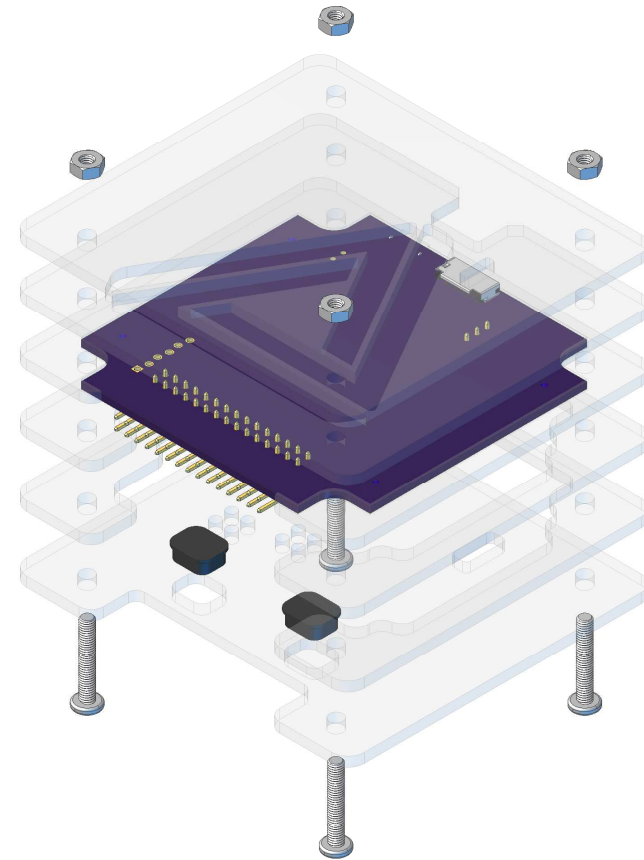
SHEET

4 OF 5

3D Printed Buttons x2



For simplicity, assemble the case upside down like shown below:



NOTES

1. As a reference, the OpenScope PCB lays in the same layer as sheet 4, and sheets 3 and 5 sandwich the PCB into place.

MATERIAL

FINISH

UNITS

Assembly

OpenScope MZ Acrylic Case

SIZE
A

DATE
06/29/2017

DWG NO.

REV

SCALE

DRAWN BY:
DS

SHEET

5 OF 5